

HUA TASI PAINTS CO., LTD.



M
E
D
U
S
A

Medusa
HUA TASI PAINTS CO., LTD.

電話：(07)3656297

傳真：(07)3657697

網址：www.medusa-paint.com.tw

地址：高雄市楠梓區楠梓科技產業園區東三街4號

about us _____ P01-P03

Environmentally friendly coating series _____ P04-P11

Imitation concrete paint _____ P12-P13

Full range of waterproof coatings _____ P14-P19

EPOXY resin / Other waterproofing materials _____ P20-P21

Protective paint / primer _____ P22-P23

Actual case _____ P24-P40

自潔性的優

天然無毒的堅持

Medusa

Meudsa foreword

Medusa's owner, Hua Tsai Paints Co., LTD who is specialized in waterborne imitating stone paint and full series of inorganic waterproofing material. All of our material is formaldehyde-free, non-toxic and eco-friendly. Compare with traditional constructing procedure, we can save more than 50% of time and works, make your building structure's life longer.

Our product got many awards during these years, we have national green building material certification, the 27th Innovation Research Award for Taiwan SMEs and Taiwan Excellence 2025.



▲ The company has passed the certification of ISO 9001:2008/CNS 12681

▲ Won the third place in the 100-year park business greening beauty competition-landscape design category

▲ Won the third place in the 100-year Building Renovation and Maintenance Award

ABOUT US

關於華彩美杜莎

Environmental protection is Hua Tsai's core concept, so we develop imitating stone paint to take place of real one, therefore we can avoid to over develop and destruct the nature, to reach sustainable development.

Imitating stone paint can be applied on any shape and any material, it is not be limited.

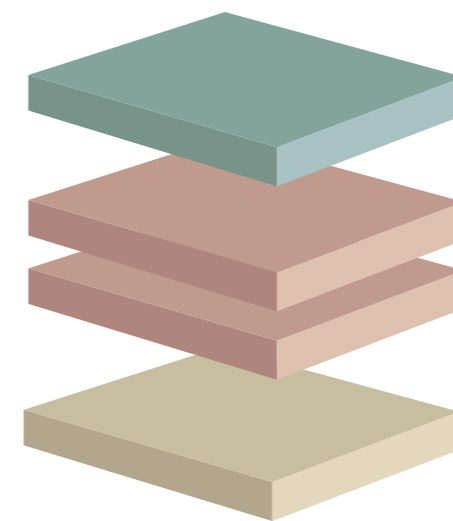


We have expert RD team and full experience service team to offer you one shop service, also we can customize the product which can reach over 95% of similarity according to your demand.

With the base of Integrity, responsibility and creativity, Hua Tsai Paints Co. Ltd. can offer various, beauty and healthy life aesthetics.



Hua Tsai's Coatings is a pure water-based, environmentally friendly technological product



- 4 **Waterproof protective finish**
Waterproof, protective, alkali-resistant, and UV-resistant, divided into flat light and bright light
- 3 **Main material**
Main material, creating textured patterns and colors with varying degrees of coarseness and fineness, primarily using sprayed coatings.
- 2 The intermediate layer enhances durability and toughness, serving as the base color layer.
- 1 **High Adhesion Interface Primer**
Strong adhesion, resistant to strong alkalis, suitable for various new and old substrates without removal.

High-quality products pass multiple tests

This product has passed multiple SGS tests and has been awarded green building materials, national first-class fire resistance certification, brush and abrasion resistance tests, weathering resistance tests, stain resistance tests, pull-out tests, water resistance tests, and tests for the content of eight heavy metals, etc. It is an environmentally friendly building material you can trust.

版面限制 無法詳登 如需詳情 請洽公司

測試報告號碼：KV-10-06791Z
測試項目：耐水、耐酸鹼試驗
測試結果：良好無異

測試報告號碼：KV-10-06919X
測試項目：揮發性有機物 (VOC)
測試結果：無重金屬含量

測試報告號碼：KV-10-06791Z
測試項目：耐侯試驗 (8760小時紫外線照射)
測試結果：良好無異

測試報告號碼：KV-10-06920X
測試項目：耐污染性 (咖啡、醬油等)
測試結果：無殘留

測試報告號碼：KV-10-06508X
測試項目：防霉測試
測試結果：無黴菌生長

測試報告號碼：KV-10-06919X
測試項目：耐洗刷測試 (2000次)
測試結果：無變化

| SGS | SGS | SGS | SGS | SGS | SGS | SGS | SGS | SGS | SGS |
|-----|-----|-----|-----|-----|-----|-----|-----|-----|-----|
| SGS | SGS | SGS | SGS | SGS | SGS | SGS | SGS | SGS | SGS |

SGS Inspection report

Imitation stone paint

| Colorful art imitation stone paint |

Give you the most real touch
Beyond 95% imitation stone vision

Medusa

- Light weight
- non toxic
- Self cleaning
- Safety
- Anti crack

Characteristic

- Nature and lifelike** Every sample of stone can be simulated, like blue stone, granite, marble, and better than the stone paint. Present the natural texture and grain of stone, just like the same.
- Always brand-new** No rough pores and easy to clean with water, so the pollution-resistance is better than the stone. It's the imitation of stone but better than the stone.
- Light** It's light and not dropping off is safer than the stone.
- Easy to repair** The main coating sprayed fully over the paint, easy to re-spay.



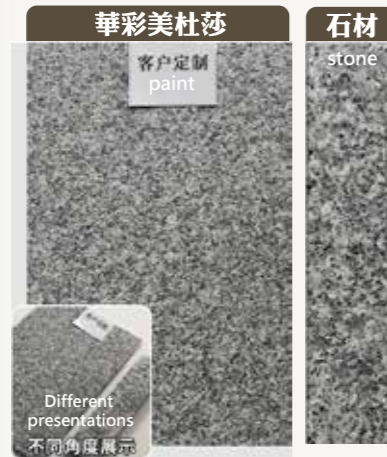
Material description

- Resin** High-component ultra-weather-resistance water-based acrylic resin, high resin composition, no rough pores and pollution-resistance.
- Pigment** Inorganic, natural stone powder, variety of color sprayed at one time, plentiful layers, easy to spray, fast to spray, nontoxic.
- Coating** The latest technique of water-based coating, create a permanent connect to each coating, weather-resistance, durable, anti-mold, anti-crack and wet cut-off.

一級耐燃
Grade 1 flame retardant



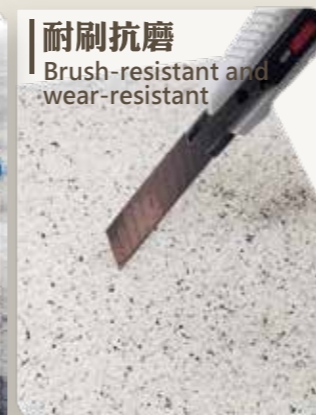
逼真仿製
Realistic imitation



超強抗汗
Super stain resistant



耐刷抗磨
Brush-resistant and wear-resistant



Color example

※ There are a variety of colors to choose from or according to sample color, color is for reference only



AT-663



AT-679



AT-687-1



AT-E3069



ATN-21111202



ATU-23082901



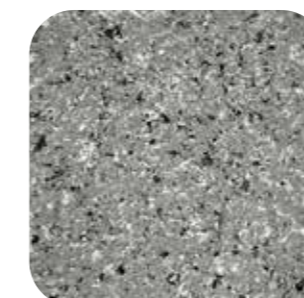
GSN-HF001



GSN-HL001



ATN-23101101



AT-790



ATN-22112302-2



GSN-23081101

Gravel rough series

| Medusa Eco-friendly Coating Series |

Rough feel without pores
Natural and colorful good match

Characteristic

Nature and lifelike

Every sample of stone can be simulated, like blue stone, granite, marble, and better than the stone paint. Present the natural texture and grain of stone, just like the same.

Always brand-new

No rough pores and easy to clean with water, so the pollution-resistance is better than the stone. It's the imitation of stone but better than the stone.

Light

It's light and not dropping off is safer than the stone.

Easy to repair

The main coating sprayed fully over the paint, easy to re-spray.



Color example

※ There are a variety of colors to choose from or according to sample color, color is for reference only

Fine



MG-B004



MG-Y004



MG-G005

Coarse sand



GKU-HU009



GKU-HU005



GKU-19070202

Star diamond



GKU-18100504



GKU-18100505



GKU-HC011

Earth Mineral Coating

| Medusa Eco-friendly Coating Series |

Human-centered approach, pursuing nature
insisting on using the most original materials

Characteristic

Environmentally Friendly

Made with natural and recycled materials, environmentally friendly

Naturally Healthy

Healthy and fresh, with a natural scent, it regulates temperature and humidity, and has insect-repellent properties, making your living environment more comfortable and safe.

Natural Ingredients

Natural clay, recycled wood fiber, herbal fiber, inorganic pigments, and special latex

Easy to Apply

Can be applied using trowel or spray application methods.



Color example

※ There are a variety of colors to choose from or according to sample color, color is for reference only



Seamless floor coating
| Colorful art imitation stone paint |

9H wear-resistant floor
No seams, no dirt

Medusa

- Durable
- Non toxic
- Self cleaning
- weather resistance
- Anti crack

Characteristic

- Stone like texture** Diverse stone-like effect, natural, elegant and fine texture.
- Easy construction** Using trowel only, electric and pneumatic tools are unnecessary. According to different methods and colors to create different texture.
- Scrub-resistance** The paint with high adhesion and good water-resistance is easy to clean.
- Safety** The paint with slip effect is completely water-based environmental formula, odorless, and not drop-off like tile.



Color example

※ There are a variety of colors to choose from or according to sample color, color is for reference only



GT-105



GT-103



GTN-23071801



GTN-HI001



GT-17100501



GT-101



GTN-HE001



GT-129



GT-104



GTN-20022501



GT-111



GTU-HJ001

※ Prohibited for use in food

Performance case

Tsao Yan Di-Bao has a wide range of applications, which can be used on walls or floors, and can also be used on bathroom sinks



Before



After



Custom art paint

| Colorful art imitation stone paint |

Unlimited color change
Create exclusive and unique

Medusa

- Customization
- Uniqueness
- Non-toxic
- Any substrate
- Creativity

Characteristic

natural style

Different textures are made according to the tools, and the texture is restrained, elegant and delicate.

Healthy

Anti-mold, wet-cutting off, good to living.

Crubing resistance

High resin composition, no rough pores, anti-crack for tiny crack, easy to clean with water(no detergent).

Lightfast

Not color fading, not dropping off.

Easy to repair

The main coating sprayed fully over the paint, easy to re-spay.



Color example

※ There are a variety of colors to choose from or according to sample color, color is for reference only



FBN-HC001



GKN-601M1



FGT-HB003



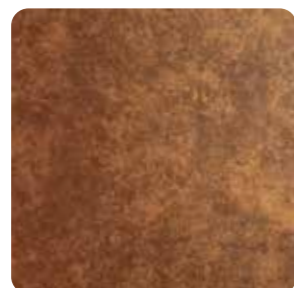
FGT-HB008



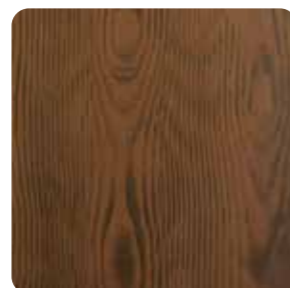
FGT-HB002



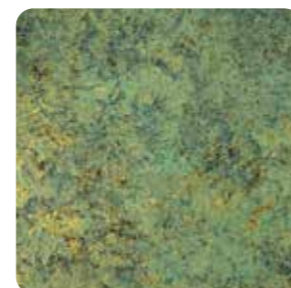
FBN-23101201



FBM-23092201



FBN-23121901



FBM-JK001-2

Color example

※ There are a variety of colors to choose from or according to sample color, color is for reference only



Styling paint



Styling paint



Styling paint

Construction case

Before



After



Before



After





Imitation architectural concrete

| Colorful art imitation stone paint |

Classic and elegant natural style

Medusa

- Elegant texture
- True to the original
- original
- Multiple choices
- Safe and non-toxic

Characteristic

natural style

Different textures are made according to the tools, and the texture is restrained, elegant and delicate.

Healthy

Anti-mold, wet-cutting off, good to living.

Crubing resisitance

High resin composition, no rough pores, anti-crack for tiny crack, easy to clean with water(no detergent).

Lightfast

Not color fading, not dropping off.

Easy to repair

The main coating sprayed fully over the paint, easy to re-spay.



Color example

※ There are a variety of colors to choose from or according to sample color, color is for reference only



Paint clear water mold



Wood grain clear water mold



Handmade clear water mold



Construction case



I Recycled Coatings

| Medusa Environmental Coating Series |

Ando's style is classic and elegant.
It presents the beauty of nature in its original form.

Characteristic

Sustainable and Environmentally Friendly

Utilizing recycled materials such as semiconductor packaging waste, potting soil, and straw as primary materials, the coating's durability is increased, promoting a circular economy.

Limitless Creativity

Can be applied to any surface, adding texture and a tactile feel, resulting in diverse creative effects.

No Surface Restrictions

Can be applied to any surface, perfectly fulfilling every homeowner's imagination.

Reduced Carbon Emissions

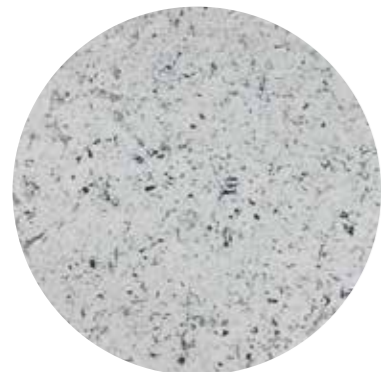
Reduces maintenance risks, requires no removal, causes no secondary pollution, generates no waste, and achieves seamless repairs.

General weather-resistant / green building materials / recycled and environmentally friendly / ESG



Color example

※ There are a variety of colors to choose from or according to sample color, color is for reference only



Stone-like coatings



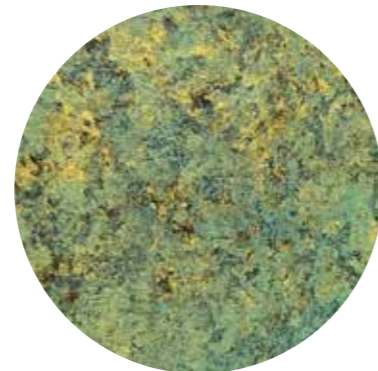
Single-color coatings



Fair-faced concrete-like coatings



Floor coatings



Custom-made artistic coatings

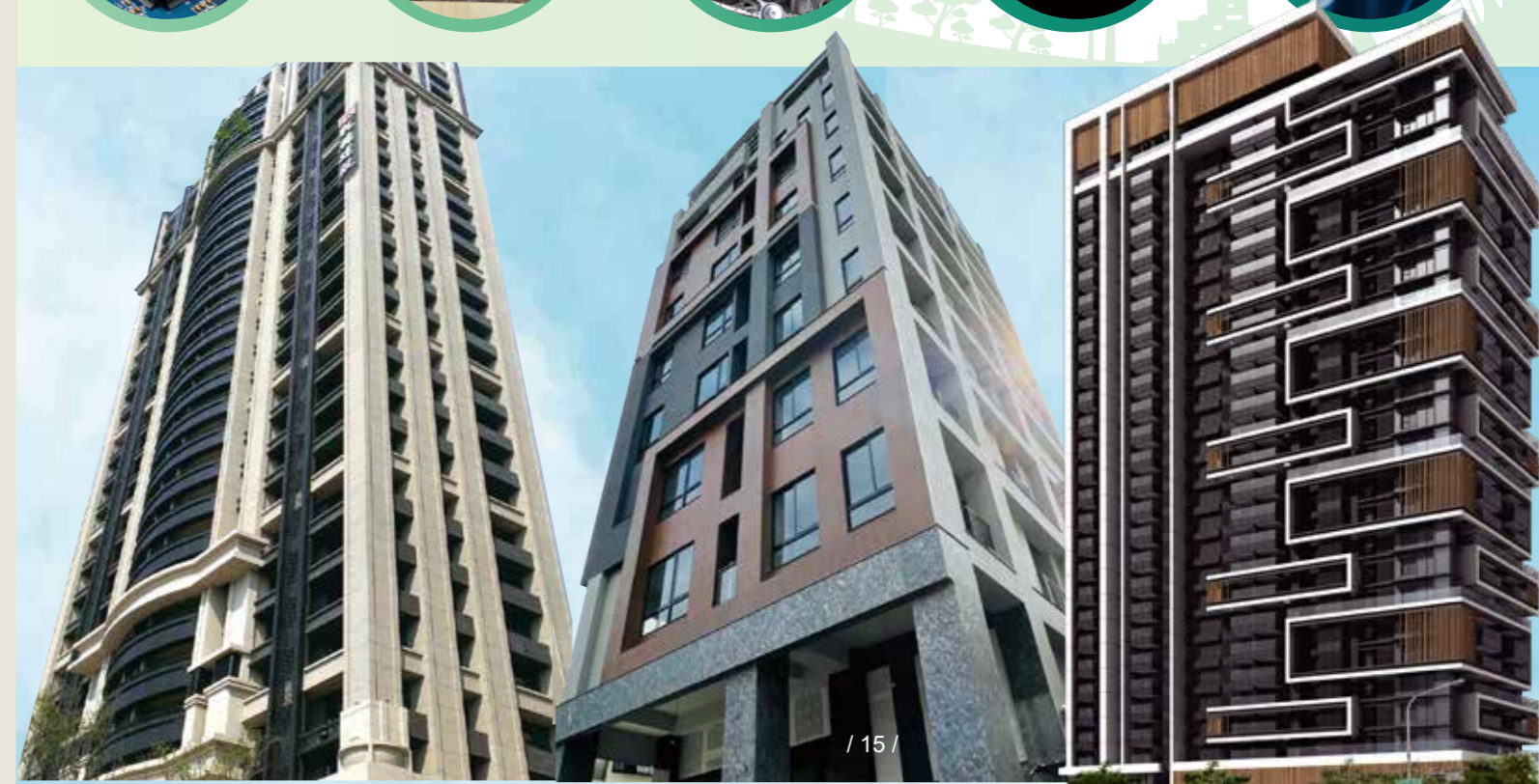


Earth coatings



Implementing a circular economy

Composite environmentally friendly building materials





Uphold recycling and innovation to create a sustainable future!

use **40%**
Recycled materials

AiRecycling Coatings uses agricultural plant fibers from certified sources of recycling, as well as recycled semiconductor materials from companies like ASE and TSMC, and recycled building materials as raw materials, with a content of over 40%.

This transforms waste into valuable resources, responding to environmental ESG principles and effectively reducing energy consumption and carbon emissions.

01



improve **30%**
Wear-resistant / self-cleaning

The addition of recycled spherical silica increases the coating's abrasion resistance, tensile strength, and hardness, making it more suitable for withstanding friction and wear, more durable, and less susceptible to external factors, thus extending the coating's service life.

Furthermore, it possesses good chemical stability, enhancing the coating's resistance to chemical corrosion and making it more resistant to corrosion and dissolution.

02



improve **6~8°**
thermal insulation coefficient

Reducing heat conduction and overall heat absorption in buildings or corrugated iron structures helps save energy costs and improve energy efficiency.

Maintaining stable indoor temperatures and reducing heat outflow makes homes more comfortable and effectively reduces net heat from high temperatures and heat waves. This action helps reduce building emissions and environmental impact, aligning with sustainable development principles.

03



LET'S **SAVE**
THE WORLD

Low carbon and energy saving
environmental protection and sustainability



Norganic Crystalline Waterproofing & Heat Insulation Complex Material

| Medusa i - House |

Waterproof and heat insulation
Finished at once



Characteristic

Material

Acrylic inorganic resin (agent A) and special inorganic powder (agent B)

Scope

Pure water-based cement-based material, used for roof renovation and new roof waterproofing projects

Waterproof and thermal insulation

Its performance is waterproof and heat insulation, long service life, simple construction, The temperature difference is 16 degrees

Simple construction

A+B mixed and ready to use, quick and easy construction, Different textures can be created according to different construction methods.



Characteristic

Superior waterproof

Inorganic Calorcement I Color penetrates deeply into concrete, creating crystals.

Multiple colors

Inorganic toner can be added to change the original color of the cement, and the construction method can present the texture of sandstone and enhance the appearance of the building.

Multi performance

Environmentally friendly, functional, adhesive, decorative

Penetrate inside

After being applied to the surface, it can quickly produce a hydration reaction, with high compactness. The permeable structure is integrated with the substrate, and the waterproof layer from the inside to the outside can achieve the performance of water blocking.



construction



1. clean the surface



2. Apply primer (penetrating crystalline material)

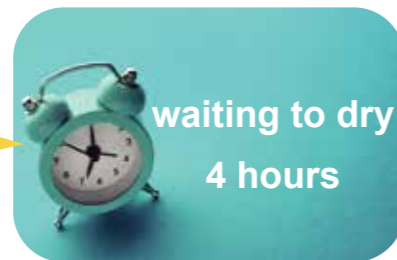


1 Resin
: 4 Powder
Mix

3. Resin (A agent) + powder (B agent) 1:4 ratio mixing



4. Apply the first layer, the thickness is about 1.5mm



waiting to dry
4 hours

5. Wait for about 4 hours to dry



6. Apply a protective top coat and finish

roof tin



Before



After



教學影片



Waterproof, heat-insulating, and colorable



Temperature difference -16 degrees

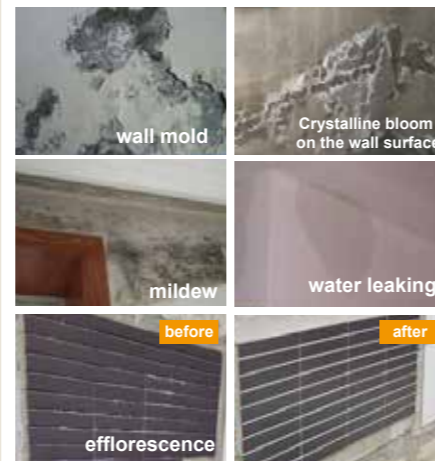
Color example

※ There are a variety of colors to choose from or according to sample color, color is for reference only



Product Feature

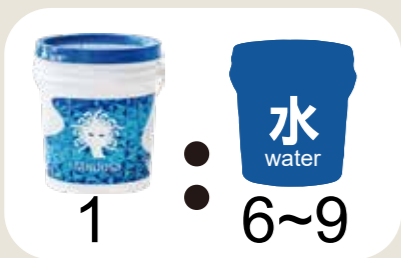
- Superior waterproofing effect** i-WaterProof has wonderful waterproofing ability with good adhesion tension which can be a part of your base.
- Non-toxic** It can seal all cells in structure, make your building stronger.
- Good adhesion tension** i-WaterProof also has good effect for anti-mildew and prevent moisture, which will make your living surrounding healthier.
- Liquid type waterproofing material** Liquid type plant extract waterproofing material, used with masonry process, which can save your time cost for more than 50%.



Product Information

i-WaterProof is a liquid type additive to concrete, cement and sand, which can help the walls become strong waterproofing basic structure. It also can be the additive to tile adhesive and sealant.
 Tool: Mixer, Trowel, Putty Board, Cement Sprayer
 Packaging : 5 gallons (18kg)
 Thickness / Works limit : Base 1.5-2cm / 40m2 · Powder glossy 3mm, 130m2

Dilution Ratio



Dilute 6 times with water



Add the diluted iwaterproof to the cement sand



Use after mixing well

Comparison chart

| | traditional waterproofing material | i-Waterproof |
|--------------------------|------------------------------------|-----------------------------------------|
| Waterproof effect | 2-10 years | over 15 years |
| Component | Organic, easily changed with time | Water-base, Eco-friendly, toxic-free |
| working process | complicated | Base, Waterproofing finish at once |
| application | Cement & Sand, Concrete | Cement, tile adhesive and sealant, etc. |

Product Feature

※ The humidity of the sand will affect the water-resistance ratio



Inorganic plant extract calcium compound special retarder
 i-WaterProof has liquid type feature, can mix with cement evenly to reach superior waterproofing effect, in the same time it's toxic & odor free, which is safe to the workers and the residents.

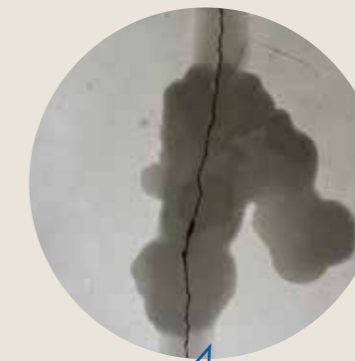
- Eco-Friendly
- Toxic-Free
- Long-lasting Waterproofing
- Save working process and time

Construction comparison

Dropping Test



use i-waterproof



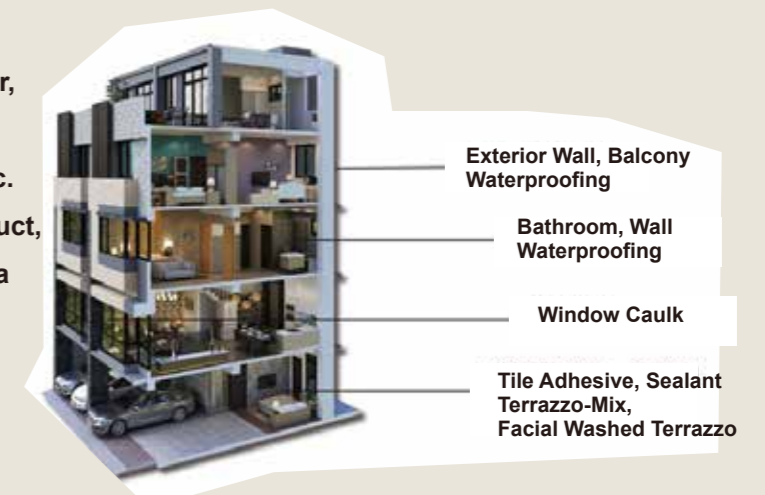
general cement



Soaking Test Time: 1 year

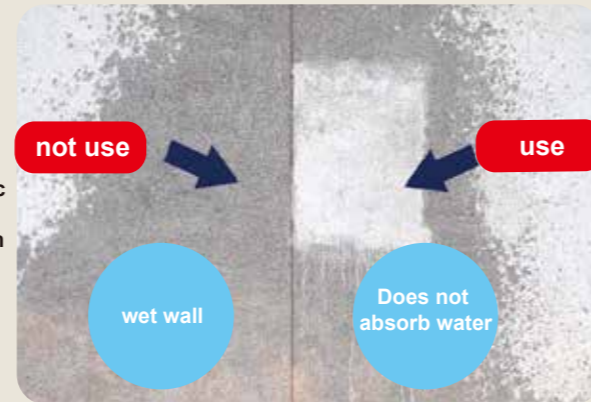
Construction scope

i-Waterproof can afford positive water pressure, which is applied in base layer, cement finish, tile adhesive, sealant, terrazzo, or stone decoration repair, etc. It is an additive for cement based product, which is a safety waterproofing formula made by inorganic compound fluxing, without odor and toxic



Characteristic

- material** acrylic inorganic resin
- scope** Primer for interior and exterior paint to enhance waterproof performance.
- Material Description** Infiltration crystalline material is a surface inorganic filling method, which is combined with a small amount of resin due to the filling effect with calcium carbonate.
- Simple construction** The construction is quick and easy, using brushes, rollers, and spray guns.



Construction



Easy to apply Waterproof



Construction steps

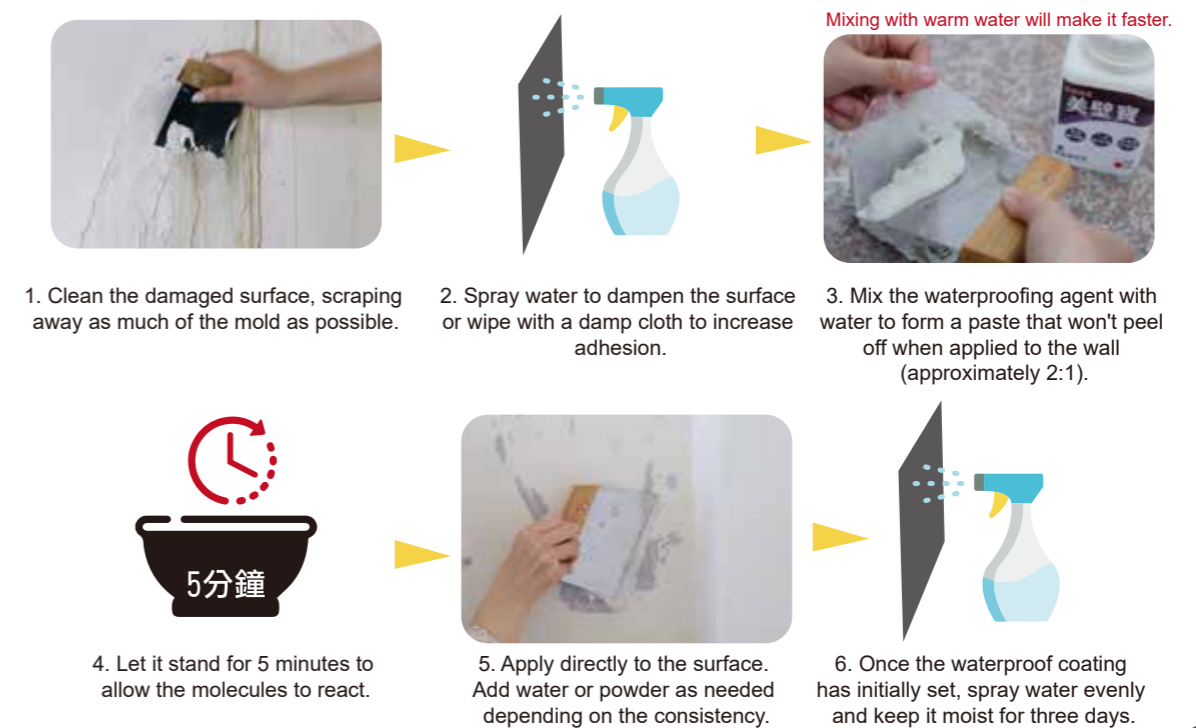
1. Base surface cleaning: remove dust, foreign objects, raised nails, cement blocks on the base surface, repair the uneven surface of the base surface and holes, etc.
2. Protection operation: Protect the construction area and surrounding areas to avoid contamination of other non-operation areas during construction.
3. (Use of primer) Add 50% water, use rollers, brushes or spray on the wall, and finish it after drying.
4. (Use of waterproof material) Add 1 times more water, mix cement and sand (1:3), and can be used as floor foundation waterproofing (thickness 3mm)

Characteristic

- material** This product is made of powder, special waterproof material, aggregate and retarded methyl fiber copolymerized
- Construction scope** It can be used for one-time construction for the inner and outer walls, reducing costs and shortening the construction period. It can also be used for the treatment of wall cancer, with excellent results.
- Multi performance** Durable and waterproof, it can be constructed according to different tools and methods to form different effects.
- Material collocation** This product can be used with cement and sand, with negative pressure resistance



Construction



construction steps

1. If water seepage occurs, stop the water first before applying the waterproof coating.
2. The surface can be sanded before applying the coating for a smoother finish.
3. For severely damaged surfaces, allow them to dry completely before applying the coating.
4. Avoid applying too thick a layer at once, as this can cause peeling and cracking.

Because the molecules of Mebibao powder are relatively small, they are not easily soluble in water. Water should be added in small amounts multiple times, stirring thoroughly until a paste-like consistency is achieved.



Epoxy resin

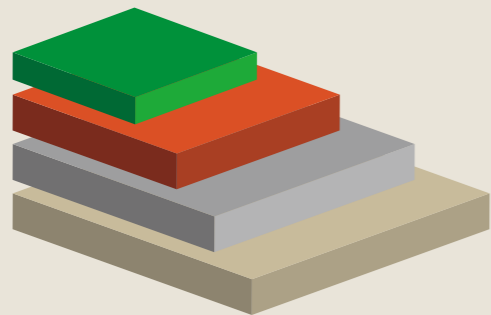
| Quick dry Epoxy |

Excellent leveling and stable quality
Not easy to peel off and crack

Characteristic

- low water absorption** The material has good density and extremely low water absorption.
- strong adhesion** Strong adhesion, not easy to peel off and crack.
- safe and non-toxic** Non-toxic and low odor, waterproof and durable, easy to clean.
- Excellent wear resistance** Good water resistance, oil resistance, heavy pressure resistance, impact resistance and wear resistance.

Construction method (flow spread mortar)



- Primer**
 - Main ingredient: 20kg
 - Hardener: 10kg
 - Drying time (25°C): 8 hours
- Middle coat**
 - Main ingredient: 20kg
 - Hardener: 10kg
 - Drying time (25°C): 12 hours
- top coat**
 - Main ingredient: 18kg
 - Hardener: 4.5kg
 - Drying time (25°C): 12 hours

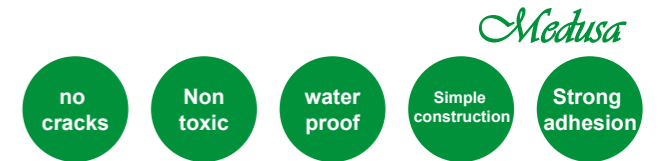
Precautions

- Moisture, grease, sludge, iron rust, dust, salt and other attached dirt on the surface must be cleaned.
- Construction should be avoided in rainy weather, and those with wet surfaces must be completely dry before construction.
- The main agent and hardener must be mixed evenly according to the specified ratio before use.
- Chemicals should avoid flames, candles, skin contact, and airtight operations.



Waterproof

| Multiple base waterproofing |



| | |
|----------------------|--------------------------------------------------------------------------------------------------------------------------------------------------------------------------------------------------------------------------------------------------------------------------------------------------------------------------------------------------|
| Name | EVA & acrylic emulsion system of waterproof A |
| Product type | WE-101A |
| Components | German EVA & acrylic emulsion |
| Applicable scope | External wall, window frames, secondary joints, bathroom, balcony, sink, reservoir, swimming pool, oblique roof waterproofing, basement exterior, atrium garden waterproofing. |
| Characteristic | High elongation, high solid content, breathable, high adhesion to cement, wet construction is ok, putting tile right after construction is ok, no hydrolysis, tensile-resistance, good toughness, good adhesion, no after tack, water-based, nontoxic, not brittle in long time, not decay in water, meet the environmental discharge standards. |
| Usage | A agent 18kg; B agent 20kg, with water 10-15% |
| Painting method | Stirring the hardener especially for blender and mixing to fully uniform. Construction temperature should be more than 5°C. No construction in the rain or windy. Ventilation equipment is required in confined space. |
| Drying time | 4hr |
| Theoretical coverage | 0.8kg/m ² |
| Capacity | 5 gallons |



| | |
|----------------------|---------------------------------------------------------------------------------------------------------------------------------------------------------------------------------------------------------------------------------------------------------------------------------------------------------------------------------------------------------------------------------------------------------------|
| Name | Inorganic cement mixture; Inorganic cement with fiber mixture. |
| Product type | WE-101B1; WE-101B2 |
| Components | Inorganic cement; Inorganic cement with fiber. |
| Applicable scope | External wall, window frames, secondary joints, bathroom, balcony, sink, reservoir, swimming pool, oblique roof waterproofing, basement exterior, atrium garden waterproofing. |
| Characteristic | High elongation, high solid content, breathable, high adhesion to cement, wet construction is ok, putting tile right after construction is ok, no hydrolysis, tensile-resistance, good toughness, good adhesion, no after tack, water-based, non-toxic, not brittle in long time, not decay in water, meet the environmental discharge standards. Higher tensile-resistance and more toughness in fiber type. |
| Usage | A agent 18kg; B agent 20kg, with water 10-15% |
| Painting method | Brush, roll or spray |
| Drying time | 4hr |
| Theoretical coverage | 45-50m ² /18kg, 1 track |
| Capacity | 20kg |



| | |
|----------------------|------------------------------------------------------------------------------------------------------------------------------------------------------------------------------------------------------------------------------------------------------------------------------------------------------|
| Name | Cum ASPHALT system (EVA) emulsion |
| Product type | DE-202 |
| Components | High polymer German EVA & acrylic emulsion, rubber, emulsified asphalt, elastic aggregate, |
| Applicable scope | External wall, window frames, secondary joints, bathroom, balcony, sink, reservoir, swimming pool, oblique roof waterproofing, basement exterior, atrium garden waterproofing. |
| Characteristic | High ductility, high crack-resistance, good toughness, good adhesion, no after tack, not easy to blister, water-based non-toxic, high solid content, breathable, be applied to the wet condition, without multi-layer coating, one times of construction can meet the required thickness of coating. |
| Usage | Using directly or with water 5-10%. Construction temperature should be more than 5°C. No construction in the rain or windy. Ventilation equipment is required in confined space. |
| Painting method | Brush, roll |
| Drying time | 4-8hr |
| Theoretical coverage | 20-25m ² /18kg, 1track |
| Capacity | 5 gallons |



PR-L55

| Penetrating Crack Repair |

地坪裂縫 修護追蹤劑

Tracker for floor crack repair

Crack repair tracker with long-lasting repair performance

Effectively repairs cracks in cement-based substrates and provides long-term water-stopping performance. It offers tensile strength and coating film stability, while also allowing for crack extension and movement.



Product Features

- Penetrates gaps for deep repair
- Excellent high-toughness film-forming properties
- Saturates cracks to reinforce structure and durability
- Odorless, non-toxic, free of heavy metals and formaldehyde

Applications

- Roofs / Cracks
- Balconies / Window frames
- Bathroom floor waterproofing

Application Steps

Dilute 3–4 times and allow it to penetrate for about 24 hours. During the penetration period, pay attention to saturation.



H-100

| The Nemesis of Efflorescence |

H-100 白華的剋星

Efflorescence Solution

Product Features

H-100 can penetrate the surface of cement, stone, tiles, and other building materials to form a non-film water-repellent layer. It penetrates into the substrate itself, providing long-lasting water-repellent performance. After drying and curing, it is colorless, odorless, and forms no visible film.



Water-repellent

Application Steps

Treatment method for efflorescence: First, clean the efflorescence on the wall with hydrochloric acid and make sure the surface is completely dry and free of efflorescence. Then apply the first coat of H-100 (dilute H-100 with water at 1:1 and mix evenly) over the entire surface. After it dries, apply the second coat (use the original undiluted liquid).

Applications

- 水泥牆面 Cement walls
- 磁磚 Tiles



| Ceramic Stone Floor Coating |

陶晶石 地坪塗料

Ceramic stone floor coating

A new-generation stone material for flooring

Effectively resists heavy loads and vehicle pressure, providing long-lasting durability and compression resistance. Its self-cleaning effect helps keep floors clean and reduces maintenance frequency.



Pressure resistant
耐壓



Scratch resistant
耐刮

Product Features

- Easy to apply and simple to use
- Natural stone texture, eco-friendly and durable
- Excellent scratch resistance and coating stability
- Strong under pressure, water-resistant, and scrub-resistant

Applications



陽台
Balconies



庭院花園
Courtyards / Gardens



停車場地坪
Parking lot floors



| Low-Carbon Eco-Friendly Coating |

愛循環 金水塗料

當金屬遇上水，我們選擇一種更溫柔的方式保護它

水性

取代氟碳漆

When metal meets water, we choose a gentler way to protect it.

This coating is made with a high-recycled-material process. It has low odor and high hardness, and can be used on a wide range of materials and shapes.

Applications



before



after

Product Features

- 防鏽
Anti-rust
- 無毒
Non-toxic
- 耐高溫
High temperature resistance
- 高硬度
High hardness
- 防蝕
Anti-corrosion
- 環保
Eco-friendly
- 高附著
High adhesion
- 高密度
High density



Machinery and equipment



Seaside areas (high salinity)



Plastics



High adhesion interface material

water-based primer

Increased material adhesion compatible with various substrates.

product description

Product Name : High Adhesion Interface Material

Model : PR Series

Main Component : Modified Acrylic Resin

Applications :

PR-702 (General Type) : As an interface material between cement-based surfaces, calcium silicate boards, stone, etc., and new substrates.

PR-703 (Tile Type) : As an interface material between glass, tiles, etc., and new substrates, increasing adhesion.

PR-705 (Metal Type) : As an interface material between metal and new substrates, increasing adhesion to metal surfaces.

Application Method : High adhesion interface material (this is a primer layer), diluted with 2-3 times the amount of water, used as an interface material between various substrates and new substrates.

Application Method : Spraying, brushing, roller coating, or airless spray painting.



Multifunctional inorganic transparent protective

inorganic transparent protective

non-toxic safe
The safest guarantee for the whole family



平光(TC-001)

| | |
|------------------|-----------------------------------------------------|
| Name | Multifunctional inorganic transparent protective |
| Product type | Flat light (TC-001) |
| Components | Water-based acrylic inorganic resin |
| Applicable scope | Any building material |
| Characteristic | Lightfast, no anti-white, high weather-resistance |
| Usage | Using without water |
| Painting method | Brush, roll or airless paint machine in cross shape |

單液型(TC-M001)

| | |
|-----------------------|---------------------------------------------------------------------------------------------------------------------------------------------------------------------------------|
| Name | Wear-resistance water-based floor finishing paint(one-liquid)(TC-M001) |
| Materials description | Forming high hardness scratch-resistance film resin, after the water evaporated. A weather-resistance, scratch-resistance resin, especially for industrial, construction, wood. |
| Applicable scope | Cement floor, repairing of the EPOXY or PU floor, wood top coating, industrial metal top coating, pollution-resistance transparent top coating of building exterior. |
| Characteristic | It has high hardness, the coating can be air-dried or heated, and it is weather-resistant, stain-resistant, and has excellent water resistance. |
| Usage | Using without water |
| Painting method | Brush, roll or airless paint machine in cross shape |

兩液型(TC-H001)

| | |
|------------------|----------------------------------------------------------------------------------------------------------------------------------------------------------|
| Name | Scrub-resistance water-based floor finishing paint (two-liquid)TC-H001 |
| Components | Lightfast modified polyurethane, hardener |
| Applicable scope | Cement, tile, wood, PU, EPOXY |
| Characteristic | Clear and transparent after drying, high UV resistance, high weather resistance, lightfast, high pollution-resistance, 9H pencil scratch hardness above. |
| Usage | 5:1(A main agent: B hardening agent) stirred evenly before adding water 20% |
| Painting method | Brush, roll or airless paint machine in cross shape |
| Capacity | A : 10kg ; B : 2kg |

toxic free and safe

Pure water-based, quick-drying; free of 8 harmful heavy metals, formaldehyde-free, non-corrosive, and VOCs meet environmental protection requirements.

Multiple protection functions

It features multiple protective functions such as waterproofing, stain resistance, and durability, keeping items looking like new.

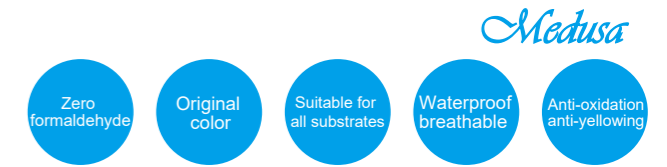
anti-oxidation

A protective film without a coating, comfortable to the touch, and resistant to oxidation and yellowing.

Scope of application

It does not alter the original color or texture of the object. Suitable for surface protection of various materials such as terrazzo, high-end products, and ceramic tiles, as well as coatings.

Introduction to Painting Tools



air compressor



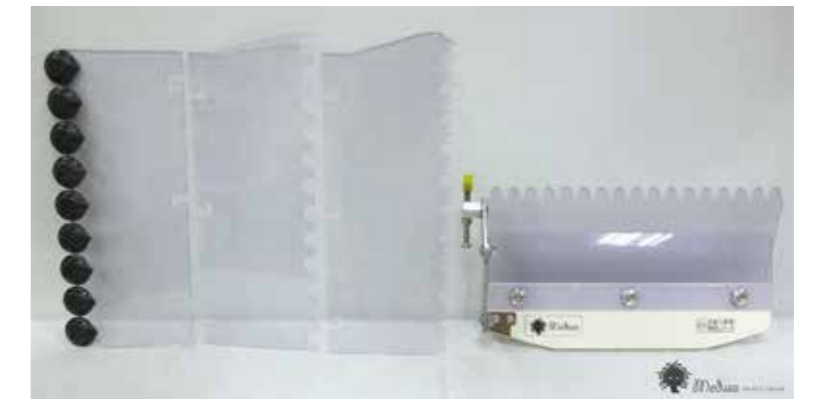
pressure tank



spray gun



Coke bucket



Various transparent shaped scrapers



Various transparent shaped scrapers



Construction case

| old house renovation |



● Lin Yuan Gang Pu private residence



● Taichung Tanzi Processing Export Zone



● Zengwen Agricultural and Industrial Gymnasium



Construction case

| old house renovation |



sip stones



Private Home Renovation



Kaohsiung Diamond Twin Stars Building



tile

Exterior wall of Kaohsiung Mega Bank



實際案例分享

—海外國際案例成果—



Shandong Jiyang Puli Real Estate-Huaxin Modern City



Shandong Jinan Hot Spring Villa



Shandong Jiyang Design Institute



Shandong Architecture University School Building



山東威海南海翡翠城

Construction case



Dragon Castle



Pasadena Restaurant



實際案例分享

— 特殊塗料案例成果 —

Construction case



Chiayi Miaoyun Lanruo Temple



Chiayi Miaoyun Lanruo Temple



Fo Guang Shan Fu Shan Temple



Fo Guang Shan Buddha Memorial Hall



Ciyun Temple



Dayuanjue Temple



Kaohsiung Yanchao Wuguang Temple

Construction case



Kaohsiung Renwu Ancient Yan Temple



Fo Guang Shan Buddha Memorial Hall



Yanchao Wuguang Jingshe



Kaohsiung Renwu Ancient Yan Temple



Yuanguang Buddhist College

Construction case



Construction case



實際案例分享

—特殊塗料案例成果—



實際案例分享

— 多彩塗料案例成果 —

Construction case



Yunlin-Chuanhu Construction



Kaohsiung - NXP Semiconductors



Shang Yang Tian Ju



Moon Embankment International

Construction case



Nanke Zhan Hotel Building II



Zhaolong Construction



Quanxing-Keyan Building



Kaohsiung Prince Construction



Kaohsiung Longteng Maca Case



實際案例分享

—特殊塗料案例成果—



Kaohsiung Ageless Pine Foot Soup



Kaohsiung Ageless Pine Foot Soup



Tainan Hongqiao Missionary Church



Tainan Yucheng Construction



Taichung Tanzi Processing District Women's Dormitory



Tainan Baba Business



實際案例分享

— 特殊塗料案例成果 —





實際案例分享

— 多彩塗料案例成果 —



Before

After



Before

After



Memorandum

